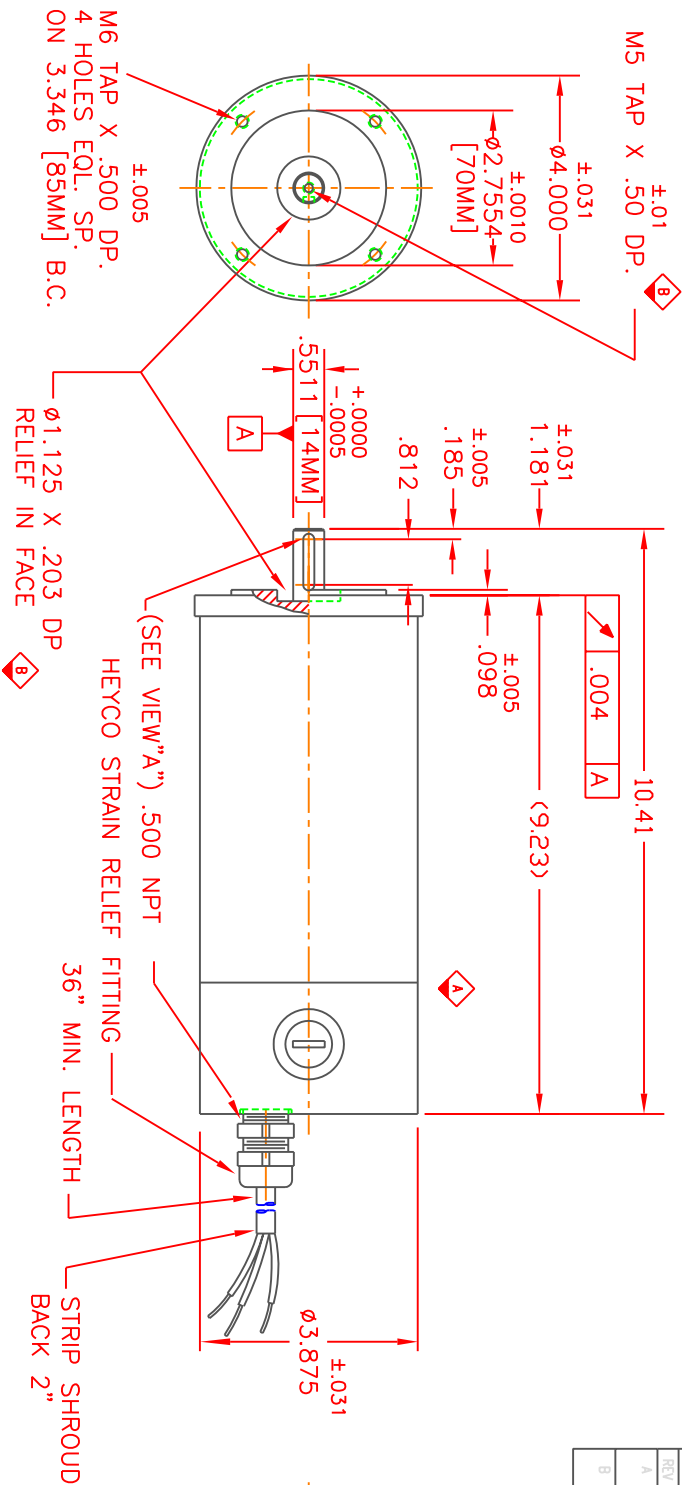
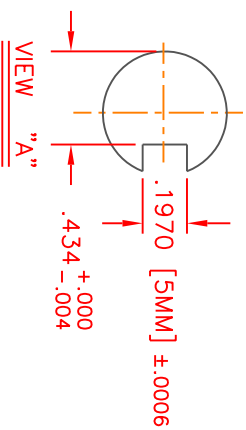


REVISION HISTORY			
REV	DESCRIPTION	DATE	APPROVED
A	BRUSH HOLDER WAS ON CASE	12/7/02	JIN
B	WAS 0.931" DEEP WAS 1.125 MIN X .12 DP MIN	5/12/02	JIN



NOTES:

- 1 BLACK POWDER COAT CRINKLE FINISH PAINT MOTOR EXCEPT MOUNTING FACE & SHAFT.
- 2 D.C. MOTOR SERIES D71C FRAME
1900 RPM @90 VOLT INPUT
195 IN-OZ. CONTINUOUS TORQUE
@1900 RPM.
- 3 ROTATION: CW SHAFT EXT. END
BLACK LEAD +.
- 4 USE BRUSH SP0114X.



THIS DRAWING AND THE INFORMATION ON IT ARE THE PROPERTY OF HALLAM BAKER INDUSTRIES, INC. AND IS NOT TO BE USED OR REPRODUCED WITHOUT PRIOR AUTHORIZATION.
HALLAM BAKER INDUSTRIES, INC.
 235 BROADWAY, NEW YORK, NY 10038-4801 TEL: (212) 269-4588

1/3HP, DC MOTOR
1900 RPM@90V/EC71

UNLESS OTHERWISE SPECIFIED			
ALL DIMENSIONS ARE IN INCHES			
INTERPRET DIM AND TOL. PER ASME Y14.5M-1994			
DECIMALS FRACTIONS			
XX	± 0.10	± 1/32	
XXX	± 0.05	ANGULAR	
XXXX	± 0.025	± 30°	
BREAK ALL EDGES			
SURFACE ROUGHNESS: 125µIN BEFORE PLATING			
THIRD ANGLE PROJECTION			
DRAWN	CHECKED	DATE	
SIZE	DWG NO.	REV	
B	MD00090X	4/11/01	4/11/01
SCALE	PLT. NO.	SHEET	1 OF 1
1:2			B