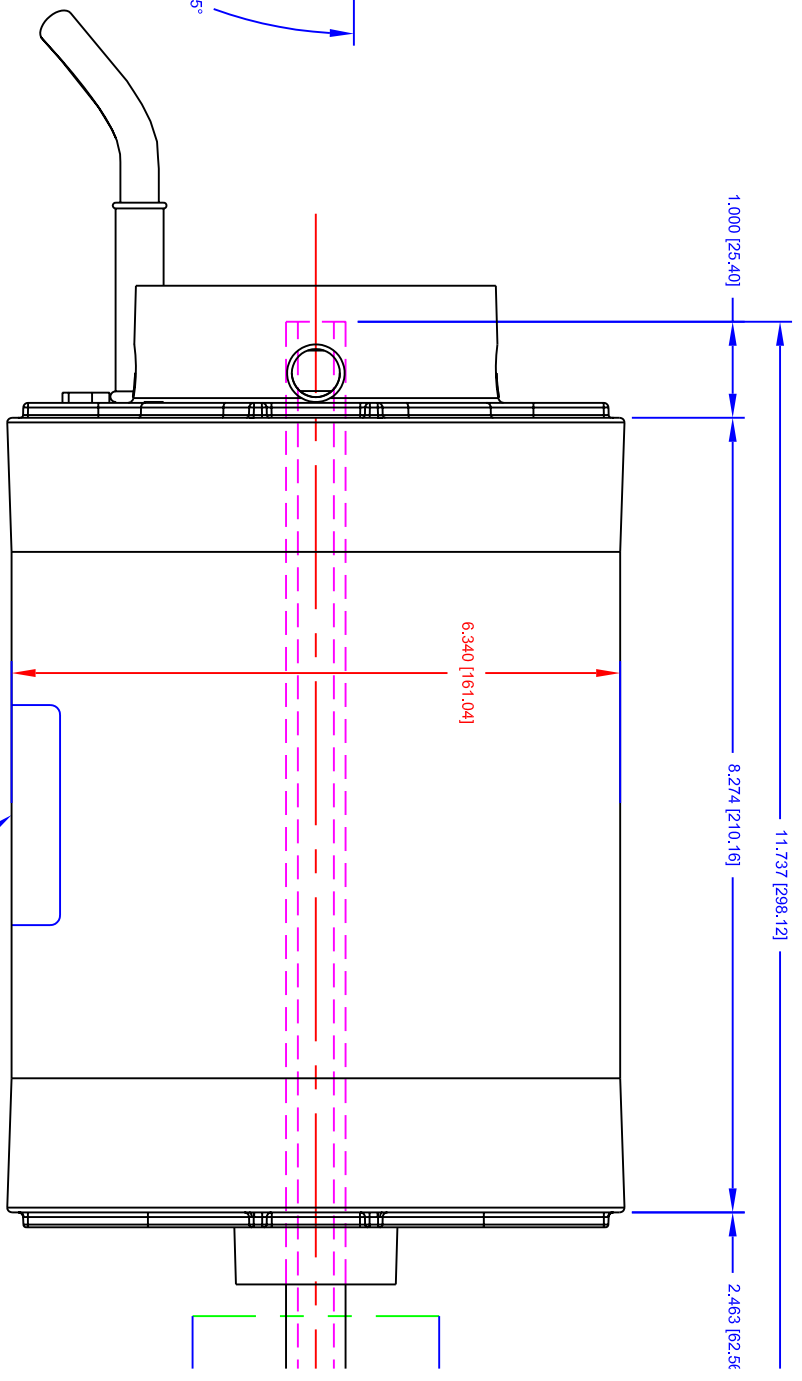


WELD SEAM @ LOCATION 'A'

STRAIN RELIEF AND LEADS
MOUNTED IN BRACKET @ LOC. 'B'

3/8"-.16 UNC-2B 0.395" [24.4] DEEP
4 REQUIRED EQUALLY SPACED
ON A Ø5.875" [Ø149.23] BOLT CIRCLE



NAMEPLATE CENTERED VERTICALLY @ LOCAT
READ WITH DRIVE END OF MOTOR DOWN

- GENERAL NOTES:
1. ALL DIMENSIONS ARE IN INCHES [MILLIMETERS].
 2. ALL DIMENSIONS ARE ±0.010" [0.25] UNLESS OTHERWISE NOTED.
 3. SHAFT RUNOUT NOT TO EXCEED 0.002 [0.05].
 4. SHAFT MATERIAL IS CARBON STEEL WITH MELLONITE COATING.
 5. STRAIN RELIEF MUST SEAL CORD ENTRY INTO MOTOR.

HP	VOLTS	Hz	RPM	ROTATION
1/6	115	60	1725	CW DRIVE END